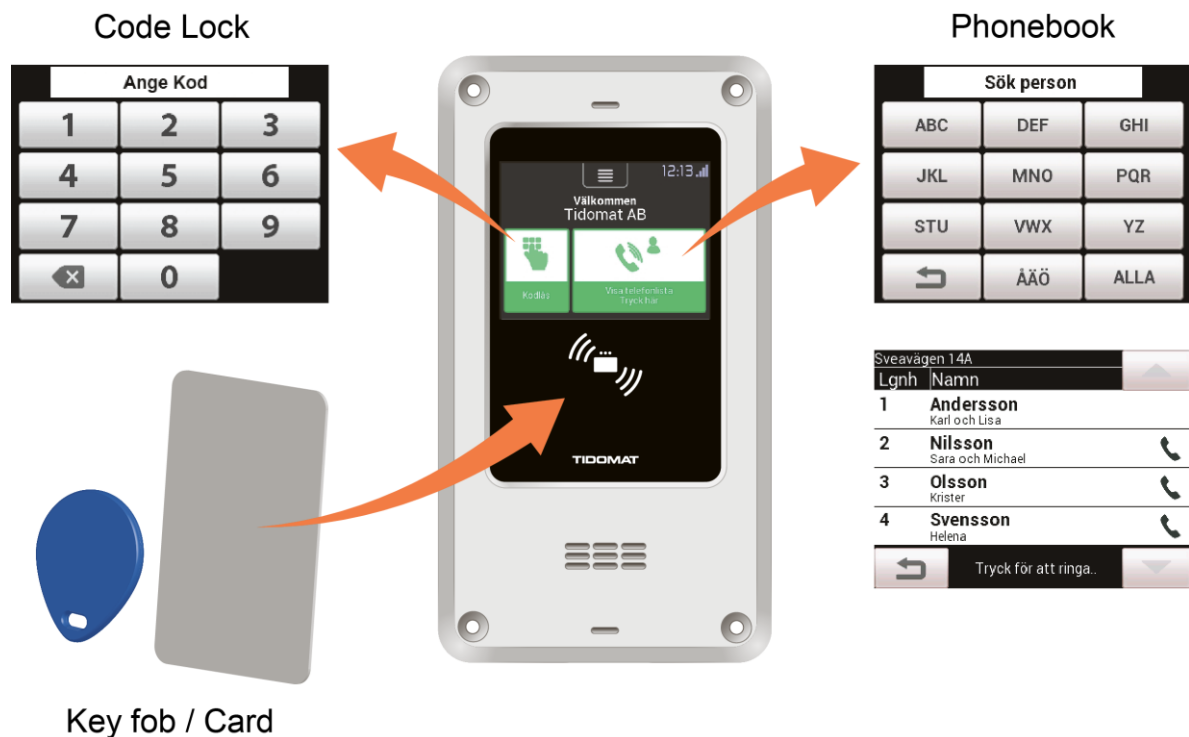
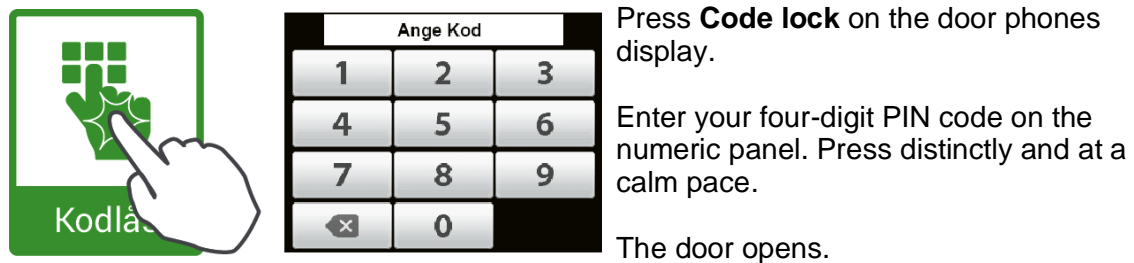


User information for door phone SO-3396-LTE

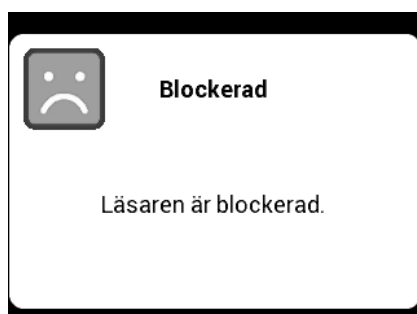
Functions of the door phone



Code lock - open gate with code



Code lock blocking

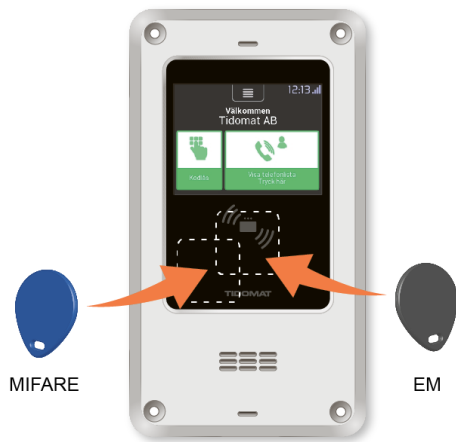


The display on the door phone is blocked for a while in the event of too many incorrect pressures.

This is to minimize the risk of unauthorized persons gaining access to the building by pressing random numbers on the code lock's number panel.

User information for door phone SO-3396-LTE

Key fob or card - open port with key fob or card

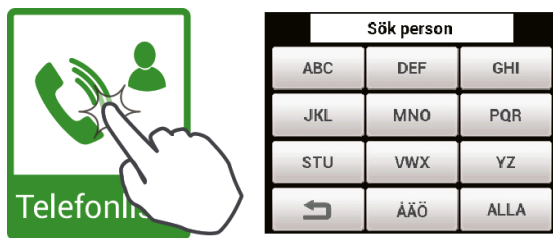


Move your key fob or card over the sensor on the door phone.

For the best reading distance, place the key fob as shown in the picture.

The door opens.

Phonebook - search and call person

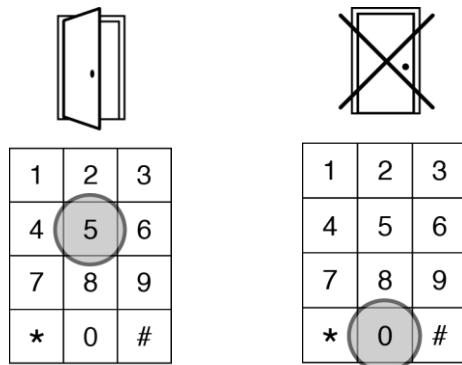


Press **Phonebook**.

Search for the name with the letter keys.
Tap the name to dial.

User information for door phone SO-3396-LTE

Open and reject



When someone calls on the door phone.
OPEN: Answer and press 5.
REJECT: Answer and press 0.

You can talk for 20 seconds before opening and 10 seconds after opening.
If you have caller ID on your phone, a 14-digit number will appear on the display when the door phone rings.

TIP!

Save the intercom as a contact in your phonebook.

Open with mobile phone



Dial the 14-digit number of the door phone.
When the door phone answers, the door will unlock.

NOTE!

This function does not work if you have a hidden number. Depending on the configuration, only the numbers registered in the door phone may open the door lock.

Roll call



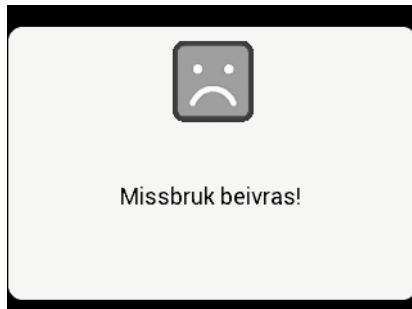
If you have more telephone numbers registered, the door phone will call on to the next registered number when busy or no answer.

NOTE!

If the call is answered by a voicemail, the roll call is interrupted and the door remains locked.

User information for door phone SO-3396-LTE

Block door phone – Prank calls



The door phone is blocked for a while after several repeated call attempts to minimize prank calls.

Evening lighting - Discreet*



The panel lighting of the door phone can be switched off during late evenings and nights. The panel lights up when touched and goes out again after a while of inactivity.

*Configured separately, between two times.

Call function in the evening *



On late evenings and nights, visitors can enter your phone number when they calls you from the door phone. This is to confirm that it is the correct phone number and minimize prank calls.

*Configured separately, between two times.

Contact (To correct your information or for support)

Name	
Address	
E-mail	
Phone number	